



AirSafe Emergency Support Kit™

Disclaimer

The AirSafe™ Kit will come with a rust protective black paint coating. The modular bumpstops will likely scratch off. This is normal. If you want to paint the kit, do not paint the part of the bump that goes into the bracket as it is a tight tolerance and paint may inhibit it from going in.

Please note that the R.S. Restorations - AirSafe Emergency Support Kit™ serves as a fail-safe solution for vehicles equipped with air ride suspension systems where components of the frame/suspension can hit the ground. The kit is designed specifically for emergency situations where an air out scenario may arise in the front, in one or both bags. Unless installed while driving, the kit will likely not help much in a full system failure as the rear of the vehicle will still be on the ground. The primary objective of this kit is to prevent the vehicle from bottoming out entirely on the side where it is installed, thereby facilitating safe towing or maneuvering to a secure location for necessary repairs. While the AirSafe™ kit provides an additional layer of support, R.S. Restorations cannot assume responsibility for any damages incurred due to incorrect installation. Users are advised to carefully follow all provided instructions and seek professional assistance if needed to ensure proper installation and usage. Moreover, it is essential to note that the AirSafe™ kit is intended for use at slow speeds, considering the heightened rigidity of the suspension system when the kit is in use. This caution is vital to ensure the safety and stability of the vehicle during operation with the kit installed. Lastly, R.S. Restorations emphasizes that it is their sincere hope that this kit will never need to be used, but it serves as an insurance policy in the likely event that something may go wrong, providing peace of mind for drivers facing unforeseen circumstances.

R.S. Restorations
info@rsbuilds.com
rsbuilds.com

Instagram, Facebook, and Youtube:
@r.s.restorations

AirSafe Emergency Support Kit™

Installation Instructions

*Some fabrication may be required

1. Air up the truck, jack up the front and safely support it with jack stands. Or jack up one side at a time.
2. Remove front wheels.
3. Remove the two outer upper bag mount bolts. (Fig. 1.)
4. Install Airsafe™ kit bracket with taller side of bump stop mount up. (Fig 2.)
5. Install rear bolt first, then line up and install front bolt, with bolt threads facing up. Push bracket toward bag mount so the bump stop mount is touching the crossmember/upper bag mount. This gives the bracket even more strength. Tighten front bolt while holding bracket against bag mount. (Fig 3.) Tighten rear bolt.
6. If deciding to use included shorter modular bump stops while driving, install now with straight side of cotter pin facing in toward engine with the loop toward front of truck. If driving with longer bump stops in the cab, you are done. Longer bump stop part number - 6387-C10-ASK-LBS
7. Reinstall wheels and lower truck.
8. Ride safe.

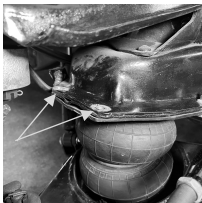


Fig 1.

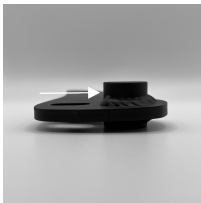


Fig 2.



Fig 3.